



EJECT

MIELOO & ALEXANDER

specialised in technology enabled supply chain improvement

tomorrow's vision delivered now

*MP3
FLDR*

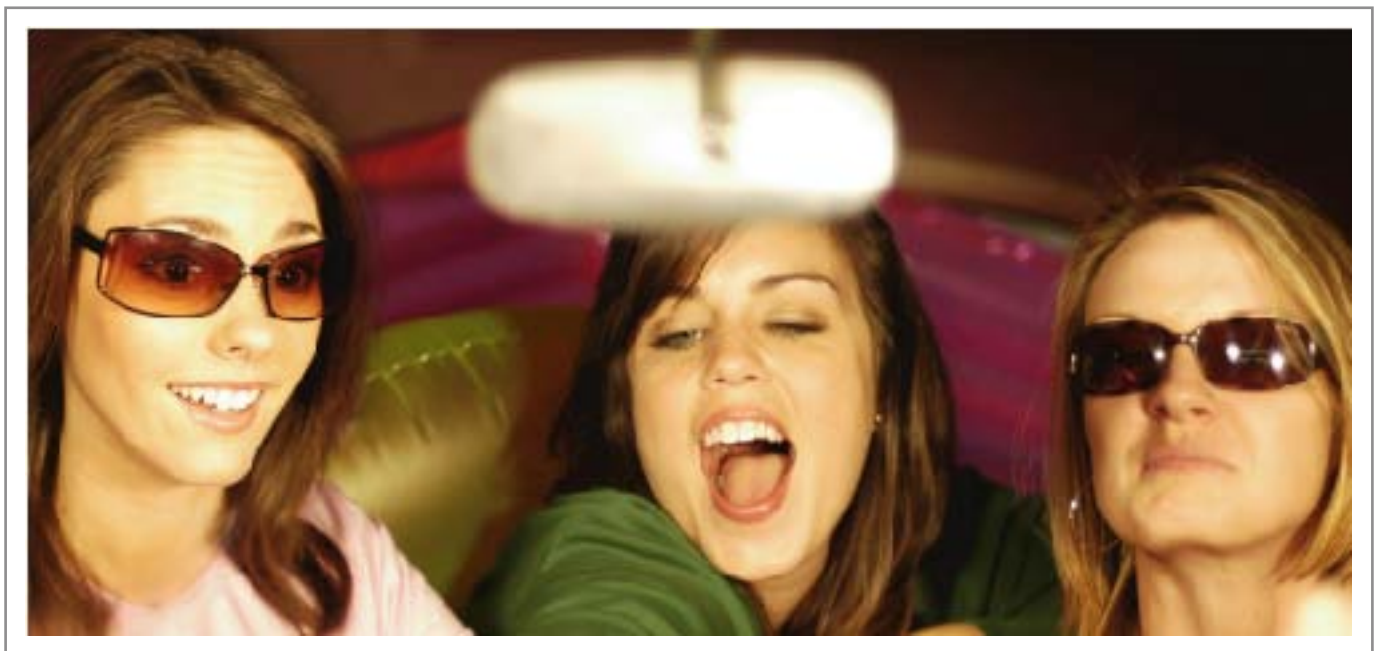
*SEEK
TRACK*

SCANN
FADER
Project reference case

Mieloo & Alexander supports Sony eVehicle getting back in the driver seat

Mieloo & Alexander supports Sony eVehicle getting back in the driver seat

The Sony eVehicle back-office was previously located in Badhoevedorp - The Netherlands. As part of the Eurostar project, the back-office was moved from Badhoevedorp to Weybridge in England. The objective was to align the different business units of Sony Europe. But the consequence was, that all people working at Sony eVehicle resigned. This led to a loss of knowledge and lack of business control. The consultants of Mieloo & Alexander retrieved and secured the previously lost knowledge, both on IT and business processes. The newly recruited staff were subsequently trained and supported.



M&A's approach and role

Initially all focus was on getting staff to be more able and confident in carrying out daily operations. After having achieved this, the focus shifted to improving business processes to further improve control on both daily operations and handling exceptions. In parallel, existing IT issues were taken up.

This meant re-aligning processes within the SAP setup of Sony eVehicle as well as improving the EDI interfaces between Sony eVehicle and its customers and suppliers.

Benefits realized

The most important benefit of this project was the control of Sony eVehicle's business operations. This was achieved with better trained and motivated staff, well documented business processes compatible with Sarbanes-Oxley. And besides that, the business and IT processes were improved.

eVehicle Sony

Sony eVehicle Line is a leading manufacturer of line fit care audio systems. These audio systems are purchased by major players in the automotive industry to be integrated in the cars during manufacturing.



About Mieloo & Alexander

Mieloo & Alexander Business Integrators is a consulting firm that specializes in technology enabled supply chain improvement, with a focus on supply chain management and visibility through the use of innovative information technology (RFID). The highly trained consultants design, plan and implement advanced supply chain solutions that focus on RFID Electronic Product Code (EPC) and real-time locating solutions (RTLS). Mieloo & Alexander has customers throughout Western Europe that include multinationals such as: Sony, Akzo Nobel, KPN, ASML, TNT and Hitachi. Mieloo & Alexander is headquartered in Hoofddorp in the Netherlands.

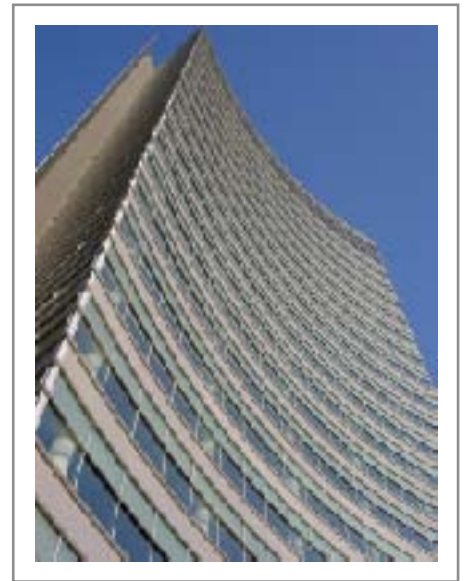
Our office

De Zuidtoren
Taurusavenue 13
2132 LS Hoofddorp
The Netherlands

T: + 31 (0) 23 565 6000

F: + 31 (0) 23 565 6009

For more information see:
www.mielooandalexander.com



Office Mieloo & Alexander

Mieloo & Alexander

Mieloo & Alexander Business Integrators is a consulting firm that specializes in technology enabled supply chain improvement, with a focus on supply chain management and visibility through the use of innovative information technology (RFID).

Contact details:

De Zuidtoren
Taurusavenue 13
2132 LS Hoofddorp
The Netherlands

T: + 31 (0) 23 565 6000

F: + 31 (0) 23 565 6009

For more information visit our website:

www.mielooandalexander.com

